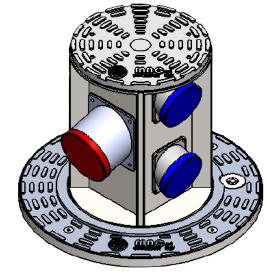
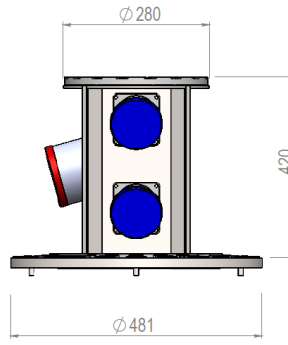


CELLAR280

ELECTRIFIED COCKPIT

- HEAD AND PLATFORM IN ALUMINIUM
- STAINLESS STEEL STRUCTURE
- SCREW THAT CAN BE OPENED WITH A DRILL
- LED: OPTIONAL



MODELLO	CELLAR280	
THICKNESS OF THE PLATES	mm	10
DIAMETER OF THE COCKPIT	mm	280
DIAMETER OF THE PLATFORM	mm	481
MATERIAL INTERNAL STRUCTURE	STAINLESS STEEL 304	
MATERIAL HEAD AND PLATFORM	ALUMINIUM	
LOAD CLASS	C250	
ROHS REQUIREMENTS	•	

• = standard equipment

COD.	
CELLAR280	0903000
KIT A	0903000-A
KIT B	0903000-B
KIT C	0903000-C
KIT D	0903000-D

KIT A	KIT B	KIT C	KIT D
<p>SIDE 1: (16 MODULES) 1 PURE DIFF. SWITCH 4X63A 0,003A 2 MAGN. SWITCH 4X32A 6KA 4 MAGN. SWITCH 2X16A 6KA</p> <p>SIDE 2: 2 THREEPHASE SOCKETS 2X16A+T IP67</p> <p>SIDE 3: 2 SOCKETS 3X32A+N+T IP67</p> <p>SIDE 4: 2 SOCKETS 2X16A+T IP67</p>	<p>SIDE 1: (16 MODULES) 1 PURE DIFF. SWITCH 4X63A 0,003A 2 MAGN. SWITCH 3X32A 6KA 4 MAGN. SWITCH 2X16A 6KA</p> <p>SIDE 2: 2 SOCKETS 2X16A+T IP67</p> <p>SIDE 3: 2 THREEPHASE SOCKETS 3X32A+T IP67</p> <p>SIDE 4: 2 SOCKETS 2X16A+T IP67</p>	<p>SIDE 1: (16 MODULES) 1 PURE DIFF. SWITCH 4X63A 0,003A 2 MAGN. SWITCH 4X16A 6KA 4 MAGN. SWITCH 2X16A 6KA</p> <p>SIDE 2: 2 SOCKETS 2X16A+T IP67</p> <p>SIDE 3: 2 THREEPHASE SOCKETS 3X16A+N+T IP67</p> <p>SIDE 4: 2 SOCKETS 2X16A+T IP67</p>	<p>SIDE 1: (16 MODULES) 1 PURE DIFF. SWITCH 4X63A 0,003A 2 MAGN. SWITCH 4X16A 6KA 4 MAGN. SWITCH 2X16A 6KA</p> <p>SIDE 2: 2 SOCKETS 2X16A+T IP67</p> <p>SIDE 3: 2 THREEPHASE SOCKETS 3X16A+T IP67</p> <p>SIDE 4: 2 SOCKETS 2X16A+T IP67</p>